



# AZ-801<sup>Q&As</sup>

Configuring Windows Server Hybrid Advanced Services

## Pass Microsoft AZ-801 Exam with 100% Guarantee

Free Download Real Questions & Answers **PDF** and **VCE** file from:

<https://www.pass4itsure.com/az-801.html>

100% Passing Guarantee  
100% Money Back Assurance

Following Questions and Answers are all new published by Microsoft  
Official Exam Center

-  **Instant Download** After Purchase
-  **100% Money Back** Guarantee
-  **365 Days** Free Update
-  **800,000+** Satisfied Customers



**QUESTION 1**

You have 10 servers that run Windows Server in a workgroup.

You need to configure the servers to encrypt all the network traffic between the servers.

The solution must be as secure as possible.

Which authentication method should you configure in a connection security rule?

- A. NTLMv2
- B. pre-shared key
- C. KerberosV5
- D. computer certificate

Correct Answer: D

Reference:

<https://docs.microsoft.com/en-us/windows/security/threat-protection/windows-firewall/create-an-authentication-request-rule>

---

**QUESTION 2**

You have an on-premises server named Server1 that runs Windows Server. You have an Azure subscription. You plan to back up the files and folders on Server1 to Azure by using Azure Backup. You need to define how long the backups will be retained. What should you use to configure the retention?

- A. Backup center
- B. Windows Server Backup
- C. the Microsoft Azure Recovery Services (MARS) agent
- D. a Recovery Services vault

Correct Answer: B

---

**QUESTION 3**

DRAG DROP

You are planning the implementation of Cluster2 to support the on-premises migration plan.

You need to ensure that the disks on Cluster2 meet the security requirements.

In which order should you perform the actions? To answer, move all actions from the list of actions to the answer area and arrange them in the correct order.



Select and Place:

Actions	Answer Area
Add a disk resource to the cluster.	
Enable BitLocker on the volume.	
Update the BitLockerProtectorInfo property of the volume.	
Create a Cluster Shared Volume (CSV).	
Put the disk in maintenance mode.	

Correct Answer:

Actions	Answer Area
	Add a disk resource to the cluster.
	Create a Cluster Shared Volume (CSV).
	Put the disk in maintenance mode.
	Enable BitLocker on the volume.
	Update the BitLockerProtectorInfo property of the volume.

Reference: <https://docs.microsoft.com/en-us/windows-server/failover-clustering/bitlocker-on-csv-in-ws-2022>

#### QUESTION 4

You plan to deploy the Azure Monitor agent to 100 on-premises servers that run Windows Server. Which parameters should you provide when you install the agent?

- A. the client ID and the secret of an Azure service principal
- B. the name and the access key of an Azure Storage account
- C. a connection string for an Azure SQL database
- D. the ID and the key of an Azure Log Analytics workspace

Correct Answer: D

Reference: <https://docs.microsoft.com/en-us/windows-server/storage/storage-spaces/configure-azure-monitor>

#### QUESTION 5

DRAG DROP

You have an on-premises Active Directory Domain Services (AD DS) domain that syncs with an Azure Active Directory (Azure AD) tenant.

The AD DS domain contains a domain controller named DC1. DC1 does NOT have internet access.

You need to configure password security for on-premises users. The solution must meet the following requirements:



Prevent the users from using known weak passwords.

Prevent the users from using the company name in passwords.

What should you do? To answer, drag the appropriate configurations to the correct targets. Each configuration may be used once, more than once, or not at all. You may need to drag the split bar between panes or scroll to view content.

NOTE: Each correct selection is worth one point.

Select and Place:

Configurations	Answer Area
Configure Azure AD Identity Protection.	On DC1: Configuration
Configure Azure AD Password Protection.	On a member server: Configuration
Install the Azure AD Pass-through Authentication Agent.	In Azure: Configuration
Install the Azure AD Password Protection DC agent.	
Install the Azure AD Password Protection proxy service.	

Correct Answer:

Configurations	Answer Area
Configure Azure AD Identity Protection.	On DC1: Install the Azure AD Password Protection DC agent.
Install the Azure AD Pass-through Authentication Agent.	On a member server: Install the Azure AD Password Protection proxy service.
	In Azure: Configure Azure AD Password Protection.

## QUESTION 6

### HOTSPOT

You need to configure BitLocker on Server4.

On which volumes can you turn on BitLocker, and on which volumes can you turn on auto-unlock? To answer, select the appropriate options in the answer area.

NOTE: Each correct selection is worth one point.

Hot Area:



## Answer Area

BitLocker:

	▼
D only	
C and D only	
D, E, and F only	
C, D, E, and F	

Auto-unlock:

	▼
D only	
C and D only	
D, E, and F only	
C, D, E, and F	

Correct Answer:



## Answer Area

BitLocker:

	▼
D only	
C and D only	
D, E, and F only	
C, D, E, and F	

Auto-unlock:

	▼
D only	
C and D only	
D, E, and F only	
C, D, E, and F	

Reference: <https://docs.microsoft.com/en-us/windows-server/storage/refs/refs-overview>

<https://docs.microsoft.com/en-us/powershell/module/bitlocker/enable-bitlockerautounlock?view=windowsserver2022-ps>

### QUESTION 7

You have an on-premises server named Server1 that runs Windows Server and has the Hyper-V server role installed.

You have an Azure subscription.

You plan to back up Server1 to Azure by using Azure Backup.



Which two Azure Backup options require you to deploy Microsoft Azure Backup Server (MABS)? Each correct answer presents a complete solution.

NOTE: Each correct selection is worth one point.

- A. Bare Metal Recovery
- B. Files and folders
- C. System State
- D. Hyper-V Virtual Machines

Correct Answer: AC

Reference: <https://docs.microsoft.com/en-us/azure/backup/backup-mabs-system-state-and-bmr>

### QUESTION 8

#### HOTSPOT

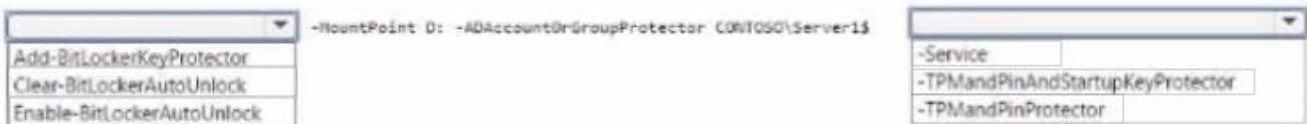
Your network contains an Active Directory Domain Services (AD DS) domain. The domain contains a server named Server1 that runs Windows Server.

You run `Get-BitLockerVolume -MountPoint C:,D | fl *`, which generates the following output.

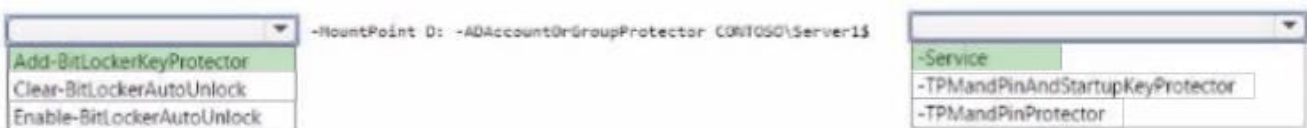
```

ComputerName      : SERVER1
MountPoint        : C:
EncryptionMethod  : None
AutoUnlockEnabled :
AutoUnlockKeyStored :
MetadataVersion   : 0
VolumeStatus      : FullyDecrypted
ProtectionStatus   : Off
LockStatus        : Unlocked
  
```

Hot Area:



Correct Answer:





## QUESTION 9

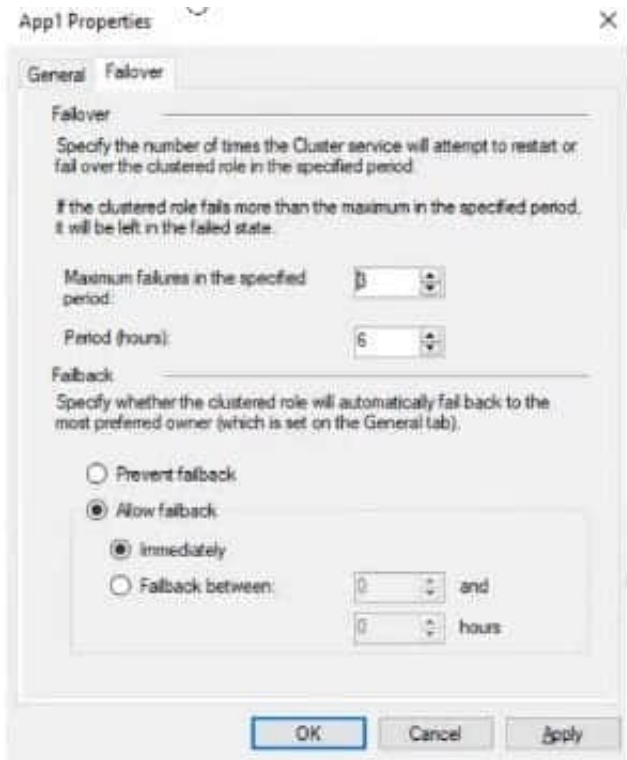
You have a failover cluster named Cluster1 that hosts an application named App1.

The General tab in App1 Properties is shown in the General exhibit. (Click the General tab.)



The Failover tab in App1 Properties is shown in the Failover exhibit. (Click the Failover tab.)





Server1 shuts down unexpectedly.

You need to ensure that when you start Server1, App1 continues to run on Server2.

Solution: From the Failover settings, you select Prevent failback.

Does this meet the goal?

A. Yes

B. No

Correct Answer: A

The Prevent failback setting will prevent the cluster failing back to Server1.

## QUESTION 10

### HOTSPOT

You have a Hyper-V failover cluster named Cluster1 that uses a cloud witness. Cluster1 hosts a virtual machine named VM1 that runs Windows Server.

You need to fail over VM1 automatically to a different node when a service named Service1 on VM1 fails.

What should you do on Cluster1 and VM1? To answer, select the appropriate options in the answer area.

NOTE: Each correct selection is worth one point.

Hot Area:



## Answer Area

Cluster1:

- Modify the settings of the VM1 cluster role.
- Configure monitoring of the VM1 cluster role.
- Change the startup priority of the VM1 cluster role.

VM1:

- Configure the Startup Type of Service1.
- Configure the Recovery settings of Service1.
- Configure the Startup and Recovery settings.
- Install and configure the Azure Monitor agent.

Correct Answer:

## Answer Area

Cluster1:

- Modify the settings of the VM1 cluster role.
- Configure monitoring of the VM1 cluster role.
- Change the startup priority of the VM1 cluster role.

VM1:

- Configure the Startup Type of Service1.
- Configure the Recovery settings of Service1.
- Configure the Startup and Recovery settings.
- Install and configure the Azure Monitor agent.

### QUESTION 11

You need to meet the technical requirements for Cluster3. What should you include in the solution?

- A. Enable integration services on all the virtual machines.
- B. Add a Windows Server server role.
- C. Configure a fault domain for the cluster.



D. Add a failover cluster role.

Correct Answer: D

Explanation:

The Hyper-V replica broker role is required on the cluster.

Reference:

<https://docs.microsoft.com/en-us/virtualization/community/team-blog/2012/20120327-why-is-the-hyper-v-replica-broker-required>

### QUESTION 12

You need to use a comma-separated value (CSV) file to import server inventory to Azure Migrate. Which fields are mandatory for each entry in the CSV file?

- A. Server name, Cores, OS Name, and Memory (in MB)
- B. Server name, IP addresses, Disk 1 size (in GB), and CPU utilization percentage
- C. Server name, IP addresses, OS version, and Number of disks

Correct Answer: B

### QUESTION 13

DRAG DROP

You have an on-premises IIS web server that hosts a web app named App1. You plan to migrate App1 to a container and run the container in Azure. You need to perform the following tasks:

Export App1 to a ZIP file.

Create a container image based on App1.

The solution must minimize administrative effort.

Select and Place:

Azure Migrate

The Azure portal

Web Deploy

Windows Admin Center

Windows Server Migration Tools

Export App1 to a ZIP file: Tool

Create a container image with App1: Tool



Correct Answer:

The Azure portal

Windows Admin Center

Windows Server Migration Tools

Export App1 to a ZIP file: Azure Migrate

Create a container image with App1: Web Deploy

[Latest AZ-801 Dumps](#)

[AZ-801 PDF Dumps](#)

[AZ-801 Braindumps](#)