



MB-500^{Q&As}

Microsoft Dynamics 365 Finance and Operations Apps Developer

Pass Microsoft MB-500 Exam with 100% Guarantee

Free Download Real Questions & Answers **PDF** and **VCE** file from:

<https://www.pass4itsure.com/mb-500.html>

100% Passing Guarantee
100% Money Back Assurance

Following Questions and Answers are all new published by Microsoft
Official Exam Center

-  **Instant Download** After Purchase
-  **100% Money Back** Guarantee
-  **365 Days** Free Update
-  **800,000+** Satisfied Customers





QUESTION 1

You create an extension of ProjTable.

You need to configure the extension.

Which three table properties can you modify in the extension? Each correct answer presents a complete solution.

NOTE: Each correct selection is worth one point.

- A. Form Ref
- B. Label
- C. TitleField1
- D. Preview Part Ref
- E. Modified Date Time

Correct Answer: ADE

Modify table properties through extension

To modify properties on a table, you must create an extension of that table. In Application Explorer, right-click the table, and then select Create extension.

You can now modify the following properties through the property sheet:

Country Region Codes

Created By

Created Date Time

*

Form Ref Modified By

*

Modified Date Time

*

Preview Part Ref Tags Title Field1 Title Field2

Reference: <https://learn.microsoft.com/en-us/dynamics365/fin-ops-core/dev-itpro/extensibility/modify-properties>

QUESTION 2

HOTSPOT



You have the following code:

```
[SysEntryPointAttributeRole]
class CashDiscountDP extends SRSReportDataProviderBase
{
    CashDiscountTmp cashDiscountTmp;
    [SRSReportDataSetAttribute(tableStr(CashDiscountTmp))]
    public CashDiscountTmp getCashDiscountTmp()
    {
        select cashDiscountTmp;
        return cashDiscountTmp;
    }
    public boolean processReport()
    {
        ...
    }
}
```

For each of the following statements, select Yes if the statement is true. Otherwise, select No. NOTE: Each correct selection is worth one point.

Hot Area:

Answer Area	Statement	Yes	No
	You can use the class as an entry point for a security privilege.	<input type="radio"/>	<input type="radio"/>
	The class allows SQL Server Reporting Services to retrieve data for the report.	<input type="radio"/>	<input type="radio"/>
	processReport() has the correct method signature.	<input type="radio"/>	<input type="radio"/>

Correct Answer:

**Answer Area**

Statement	Yes	No
You can use the class as an entry point for a security privilege.	<input type="radio"/>	<input checked="" type="radio"/>
The class allows SQL Server Reporting Services to retrieve data for the report.	<input checked="" type="radio"/>	<input type="radio"/>
processReport() has the correct method signature.	<input type="radio"/>	<input checked="" type="radio"/>

Reference: <https://docs.microsoft.com/en-us/dynamicsax-2012/developer/security-privilege-properties>

<https://docs.microsoft.com/en-us/dynamicsax-2012/appuser-itpro/how-to-use-a-report-data-provider-class-in-a-report>

QUESTION 3

You create an extension for the InventTable table.

Which two field properties can you modify in the extension?

Each correct answer presents a complete solution.

NOTE: Each correct selection is worth one point.

- A. Allow Edit
- B. Extended Data Type
- C. Visible
- D. Label

Correct Answer: AD

Add fields to tables through extension To add a new field to an existing table, you must first create a table extension. For example, to add a field that holds the radius of the released product, you must create an extension for the InventTable table in your model

You can now add the field to the extension, just as you would add a field to a table in your model. You can use two methods:

1.

In the designer, right-click the Fields node, select New, and then select the type of field to add.

2.



Drag an existing Extended Data Type or Base Enumeration from your project onto the Fields node.

Reference: <https://docs.microsoft.com/en-us/dynamics365/fin-ops-core/dev-itpro/extensibility/add-field-extension>

QUESTION 4

You need to apply a form pattern to the Vendor exclusion list. Which pattern should you use?

- A. Workspace
- B. Simple List
- C. List Page
- D. List View

Correct Answer: C

A list page presents a set of data on a user interface that is optimized so that you can browse records, find the right record, and then take an action upon that record. The list page lets the user search, filter, and sort the data. FactBoxes on the

right side of the grid show related data for the active record. Actions that are relevant to the record are located on the ActionPane at the top of the page.

Scenario: You must develop a new solution to maintain a Vendor exclusion list for each customer and item combination. The solution must meet the following requirements:

1.
Isolate all new vendor exclusion codes as a new assembly by creating a table named VendExclusions.
2.
Create an index for the table named PrimaryIdx that uses the following fields: CustAccount, ItemId, VendAccount.
3.
Ensure that users can open the Vendor Exclusion list report from the customer master form. The list must display the customer account, Item ID, and Vendor account fields.

Reference:

<https://docs.microsoft.com/en-us/dynamics365/fin-ops-core/dev-itpro/user-interface/list-pageform-pattern>

QUESTION 5

After you answer a question in this section, you will NOT be able to return to it. As a result, these questions will not appear in the review screen.

You must create a new attribute class in which to mark other classes in the ISV solution and their respective methods with the error levels Warning and Error. You have the following class: (Line numbers are included for reference only.)



Name	Comments
AccountBase	Root EDT
AccountId	Derives from AccountBase

You need to ensure that the compiler will report an error if code calls the bike method.

Solution:

Create the following attribute class:

EDT name	Comment
CalendarID	root EDT
CalendarName	root EDT
BasicCalendarID	derives from CalendarID

Insert the following code at line 04:

```
[SysObsoleteAttribute("Deprecated. Please use the bicycle class instead.", false)]
```

Does the solution meet the goal?

- A. Yes
- B. No

Correct Answer: B

The second parameter of SysObsoleteAttribute should be true to produce a compiler error message. If it set to false it produces a compiler warning message.

SysObsoleteAttribute The system provides several attributes, including the SysObsoleteAttribute class. One use of the SysObsoleteAttribute class is to tell the X++ compiler that it should fail if a particular method is called in the source code. The X++ compiler rejects the compile, and it displays the specific message that is stored in this use of the attribute. The SysObsoleteAttribute class can also be used to tell the compiler to issue warning messages instead of errors.

```
// X++
```

```
[SysObsoleteAttribute("The Automobile class might be a better choice for faster performance.", false)]
```

```
class Bicycle
```

```
{
```

```
// Members of the Bicycle class go here.
```

```
}
```

Note: Each object (Form, class, report, method) in AX has any parent class. That parent class can be an x++ class or a kernel class. Super() means calling a method with the same name in parent class.

Writing code before super() means, doing something before "execution"

Writing code after super() means doing something after "execution"



Reference: <http://axrachit.blogspot.com/2012/12/ax2012-understanding-attributes.html> <https://learn.microsoft.com/en-us/dynamicsax-2012/developer/overview-of-attribute-classes> <https://learn.microsoft.com/en-us/dynamics365/fin-ops-core/dev-itpro/dev-ref/xpp-inheritance>

QUESTION 6

DRAG DROP

A company uses Dynamics 365 Unified Operations.

You need to implement role-based security for a set of fields in a table.

How should you arrange the security elements? To answer, drag the appropriate security elements to the correct locations. Each element may be used once, more than once, or not at all. You may need to drag the split bar between panes or

scroll to view content.

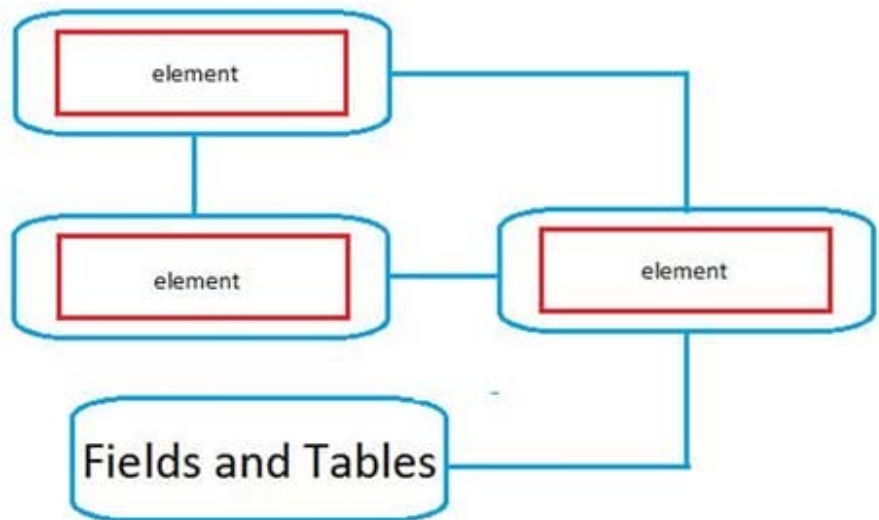
NOTE: Each correct selection is worth one point.

Select and Place:

Answer Area

Elements

- Role
- Privilege
- Duty
- Permission



Correct Answer:



Incorrect Answers:

A: Pessimistic Concurrency Control locks records as soon as they are fetched from the database for an update.

Reference: <https://docs.microsoft.com/en-us/dynamicsax-2012/developer/optimistic-concurrency-control>

QUESTION 8

DRAG DROP

A company implements Dynamics 365 Finance and Dynamics 365 Supply Chain Management.

Customers place orders from the company website store or through sales representatives.

You create a Power Platform app to manage sales quotes for sales representatives who do not have direct access to the Finance and Supply Chain Management environment. The app must meet the following requirements:

1.

Sales representatives must be able to create new customers.

2.

Ensure that only approved products can be sold.

3.

Be available when the sales representatives do not have internet access.

Web sales are imported nightly.

You need to determine a strategy to integrate apps.

What should you use? To answer, drag the appropriate options to the correct app features. Each option may be used once, more than once, or not at all. You may need to drag the split bar between panes or scroll to view content.

NOTE: Each correct selection is worth one point.

Select and Place:



Options

Dual-write

Virtual entity

Composite entity

Answer Area

App feature

New customers

Approved products

Web orders

Option

Option

Option

Option

Correct Answer:



Options

Answer Area

App feature

Option

New customers

Virtual entity

Approved products

Composite entity

Web orders

Dual-write

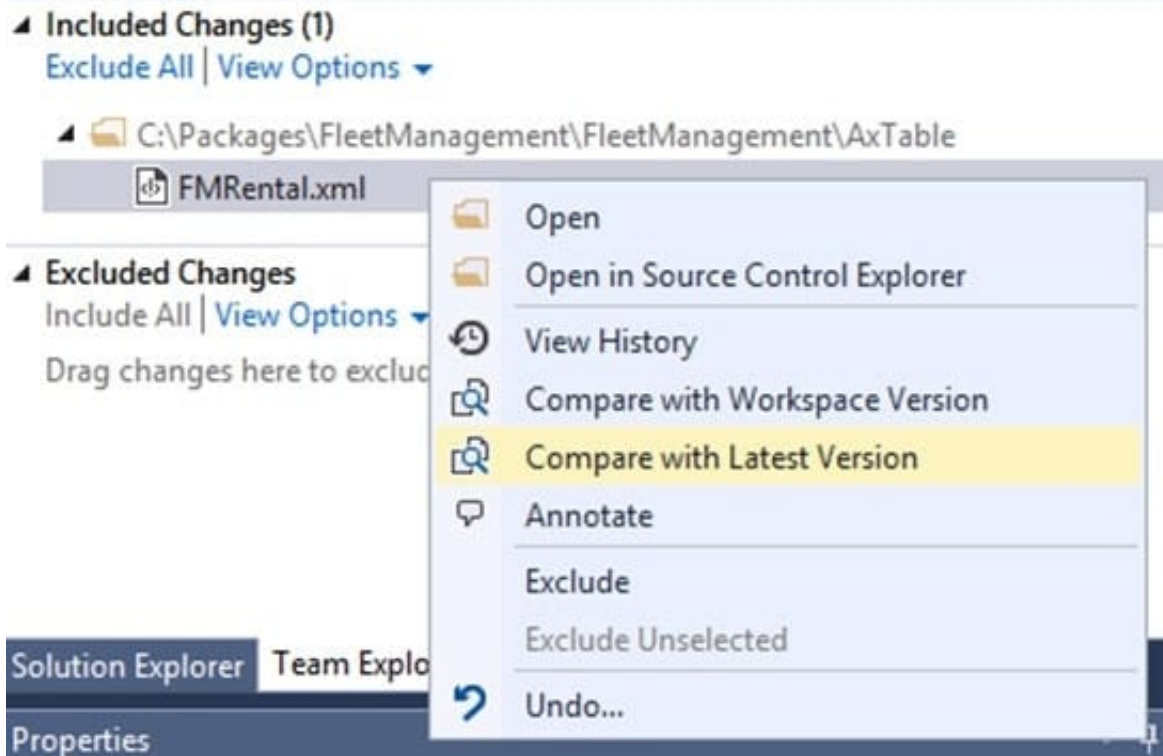
Reference: <https://docs.microsoft.com/en-us/dynamics365/fin-ops-core/dev-itpro/data-entities/dual-write/dual-write-overview> <https://docs.microsoft.com/en-us/powerapps/developer/data-platform/virtual-entities/get-started-ve> <https://docs.microsoft.com/en-us/dynamics365/fin-ops-core/dev-itpro/data-entities/develop-composite-data-entities>

QUESTION 9

You have an enumeration named truckStatus that has the following statuses:

1.
Empty
2.
Loaded
3.
Completed

You have the following code:



You need to extend this enumeration and add the following statuses to the enumeration:

Quarantine, InTransit. You must then modify code that validates the switch statement.

Solution: Add a post handler to the method that checks the enumeration and logic for your new enumeration values using the enumeration value.

```
switch (truckTable.TruckStatus)
{
    case TruckStatus::Empty:
        Info("1");
        break;
    case TruckStatus::Loaded:
        Info("2");
        break;
    case TruckStatus::Completed:
        Info("3");
        break;
    case TruckStatus::Quarantine
    case TruckStatus::InTransit
        Info("Extended");
        break;
}
```



Does the solution meet the goal?

A. Yes

B. No

Correct Answer: A

QUESTION 10

You need to apply a pattern to the newly created form to satisfy the requirements. Which form pattern should you apply?

A. Table of Contents

B. Simple List and Details

C. List Page

D. Details Master

Correct Answer: B

The Simple List and Details (SL+D) pattern is used to maintain data for entities of medium complexity. Entities of medium complexity are those entities that have six or more fields. The Simple List pattern should be used for simple entities that

have fewer than six fields. There are some exceptions where entities that have up to 15 fields are still considered simple entities. The Simple List and Details pattern is prescribed when these conditions are met:

The underlying data has more than six fields.

There are between zero and five child data collections.

Three patterns are described in this document:

Simple List and Details – List Grid – This is the basic SL+D pattern. This is the pattern that should be used by default.

Simple List and Details – Tabular Grid – This is the SL+D pattern that should be used if the number of fields in the “simple list” part of the form is larger than expected (see the “Pattern changes” section later in this article).

Simple List and Details – Tree – This is the SL+D pattern that should be used if the “simple list” part of the form is actually a tree.

Form requirement: Munson’s Pickles and Preserves Farm must change the Inventory Status form to include more columns. It plans to create a table to enter the data for the Inventory Status form as a new data source. The company wants to

add both the Product Name field and Batch ID field to this new table. The current form includes the item number, location, license plate, product inventory dimensions, and quantity.

The grid on the Inventory Status form must include the product name by using the item number and legal entity. The user interface must be created to include the new columns and the data must be available to add to the grid. The form



must

have only an Action Pane, a Navigation List, a List Style Grid, a Details Header, and a Details Tab in the design and include the Load ID field.

Reference:

<https://docs.microsoft.com/en-us/dynamics365/fin-ops-core/dev-itpro/user-interface/simple-list-details-form-pattern>

QUESTION 11

HOTSPOT

You are a Dynamics 365 Finance developer. You create a form.

You must ensure that only sales managers can view the form.

You need to set up security for the form.

What should you do? To answer, select the appropriate options in the answer area.

NOTE: Each correct selection is worth one point.

Hot Area:

Answer Area

Step	Action
1	<input type="checkbox"/> Add the menu item for the form to the entry point node of a new privilege.
	<input type="checkbox"/> Add the form object to the entry point node of a new privilege.
	<input type="checkbox"/> Add the form object to the directaccesspermissions node of a new privilege.
2	<input type="checkbox"/> Add the privilege to a new duty.
	<input type="checkbox"/> Add the menu item for the form to the directaccesspermissions node of a new privilege.
	<input type="checkbox"/> Add the privilege to a new security policy.
3	<input type="checkbox"/> Add the duty to the security role for sales managers.
	<input type="checkbox"/> Add the security policy to the security role for sales managers.

Correct Answer:



Answer Area

Step	Action
1	<div style="border: 1px solid black; padding: 2px;"> <div style="border: 1px solid black; height: 20px; margin-bottom: 2px;"></div> <div style="background-color: #e0ffe0; padding: 2px; margin-bottom: 2px;">Add the menu item for the form to the entry point node of a new privilege.</div> <div style="padding: 2px; margin-bottom: 2px;">Add the form object to the entry point node of a new privilege.</div> <div style="padding: 2px;">Add the form object to the directaccesspermissions node of a new privilege.</div> </div>
2	<div style="border: 1px solid black; padding: 2px;"> <div style="border: 1px solid black; height: 20px; margin-bottom: 2px;"></div> <div style="background-color: #e0ffe0; padding: 2px; margin-bottom: 2px;">Add the privilege to a new duty.</div> <div style="padding: 2px; margin-bottom: 2px;">Add the menu item for the form to the directaccesspermissions node of a new privilege.</div> <div style="padding: 2px;">Add the privilege to a new security policy.</div> </div>
3	<div style="border: 1px solid black; padding: 2px;"> <div style="border: 1px solid black; height: 20px; margin-bottom: 2px;"></div> <div style="background-color: #e0ffe0; padding: 2px; margin-bottom: 2px;">Add the duty to the security role for sales managers.</div> <div style="padding: 2px;">Add the security policy to the security role for sales managers.</div> </div>

Reference: <https://www.cloudfronts.com/set-form-control-access-via-security-role-in-d365-finance/>

QUESTION 12

After you answer a question in this section, you will NOT be able to return to it. As a result, these questions will not appear in the review screen.

You must create a new attribute class in which to mark other classes in the ISV solution and their respective methods with the error levels Warning and Error. You have the following class: (Line numbers are included for reference only.)

Name	Comments
AccountBase	Root EDT
AccountId	Derives from AccountBase

You need to ensure that the compiler will report an error if code calls the bike method.

Solution:

Create the following attribute class:

EDT name	Comment
CalendarID	root EDT
CalendarName	root EDT
BasicCalendarID	derives from CalendarID

Insert the following code at line 04:

```
[SysObsoleteAttribute("Deprecated. Please use the bicycle method instead", true)]
```

Does the solution meet the goal?

A. Yes



B. No

Correct Answer: A

The second parameter of SysObsoleteAttribute should be true to produce a compiler error message. If it set to false it produces a compiler warning message.

SysObsoleteAttribute The system provides several attributes, including the SysObsoleteAttribute class. One use of the SysObsoleteAttribute class is to tell the X++ compiler that it should fail if a particular method is called in the source code. The X++ compiler rejects the compile, and it displays the specific message that is stored in this use of the attribute. The SysObsoleteAttribute class can also be used to tell the compiler to issue warning messages instead of errors.

```
// X++
```

```
[SysObsoleteAttribute("The Automobile class might be a better choice for faster performance.", false)]
```

```
class Bicycle
```

```
{
```

```
// Members of the Bicycle class go here.
```

```
}
```

Note: Each object (Form, class, report, method) in AX has any parent class. That parent class can be an x++ class or a kernel class. Super() means calling a method with the same name in parent class.

Writing code before super() means, doing something before "execution"

writing code after super() means doing something after "execution"

Reference: <http://axrachit.blogspot.com/2012/12/ax2012-understanding-attributes.html> <https://learn.microsoft.com/en-us/dynamicsax-2012/developer/overview-of-attribute-classes> <https://learn.microsoft.com/en-us/dynamics365/fin-ops-core/dev-itpro/dev-ref/xpp-inheritance>

QUESTION 13

You have a table in which multiple properties must be changed. Multiple table properties are locked down at the base table and must not be overwritten.

You need to modify the table properties by extending the table.

Which table property can you populate in a table extension by using the property sheet?

A. Created by

B. Primary index

C. Cache lookup

D. Clustered index

Correct Answer: A



Reference: <https://docs.microsoft.com/en-us/dynamics365/fin-ops-core/dev-itpro/extensibility/modify-properties>

[MB-500 PDF Dumps](#)

[MB-500 Practice Test](#)

[MB-500 Study Guide](#)